

# Tech Specs

UniFi UISP Branding

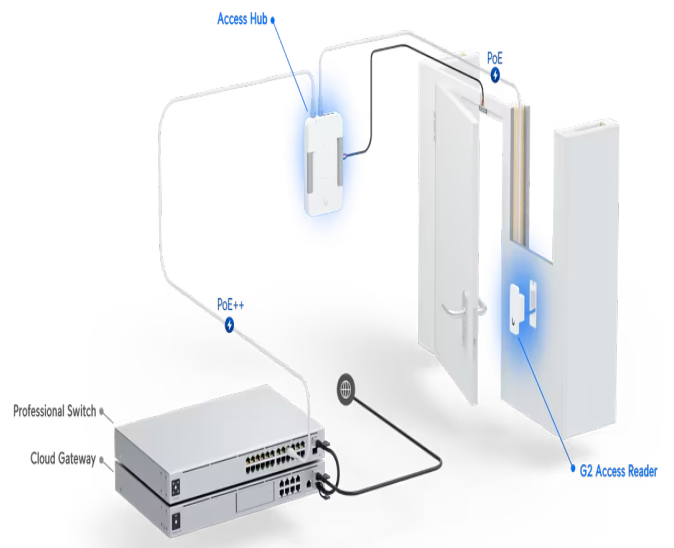
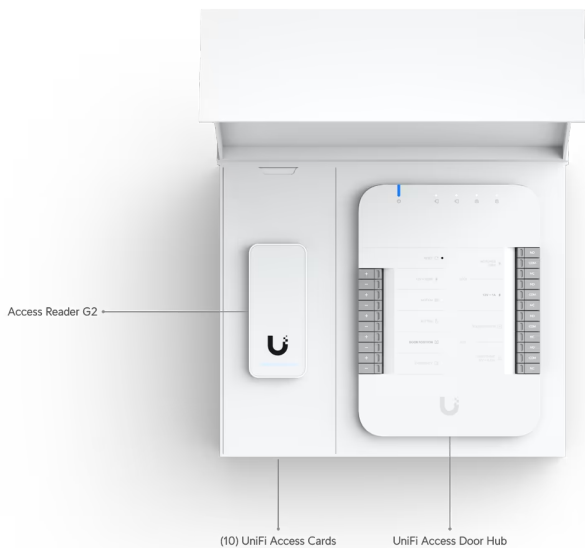
NiFi Switching Cloud Keys & Gateways Camera Security Door Access Managed VoIP New

Door Access > [G2 Starter Kit](#)

Datasheet

Marketing Images

Installation Guide



## UA-Hub-Door Mechanical

**Dimensions** 174.9 x 126 x 32.9 mm (6.9 x 5 x 1.3")

**Weight** 363 g (12.8 oz)

**Enclosure material** Polycarbonate

**Mounting material** Polycarbonate

---

## Hardware

<b>Networking interface</b>	(5) 10/100/1000 Base-T
<b>Power method</b>	PoE++ UL 294 Power-limited Class 2 PSU UL 60950/62368 LPS/PS2 PSU
<b>Max. power consumption</b>	Without PoE output: 30W With PoE output: 50W
<b>PoE input</b>	50V DC, 1A
<b>PoE output</b>	PoE passthrough, (4) PoE, 50V DC, total 20W
<b>Button</b>	(1) Factory-reset
<b>LEDs</b>	System: white/blue Output relays: white
<b>Digital input</b>	Request to exit/request to enter/remote release/door position sensor
<b>Dry output relay</b>	Lock: 30V DC, 1A Aux: 30V DC, 1A
<b>Powered output relay</b>	Lock: 12V DC, 1A Aux: 12V DC, 0.33A 12V DC, 0.33A
<b>Operating environment</b>	Indoor use only
<b>Ambient operating temperature</b>	0 to 40° C (32 to 104° F)
<b>Ambient operating humidity</b>	5 to 95% noncondensing
<b>UL 294 level</b>	Destructive attack: Level I Line security: Level I Endurance: Level I Standby power: Level I
<b>UL 294 statement</b>	Compliance with IEEE 802.3 (at or af) specifications was not verified as per The equipment is intended to comply with the section of the National Electrical Code (NEC) 725.121, Power Sources for Class 2 and Class 3 Circuits.
<b>CAN/ULC-60839-11-1 Grade</b>	Grade assignment: 1
<b>Certifications</b>	CE, FCC, IC, UL 294, CAN/ULC-60839-11-1
<b>Document number, and issue date and/or revision level</b>	UA-Hub-Door002, V01

---

## Wiring Information

Wiring gauge requirements (AWG)	Total length to device	Output load current at 12V DC
---------------------------------	------------------------	-------------------------------

100mA

6.1 m (20 ft)	22
15.2 m (50 ft)	22
30.5 m (100 ft)	22

UACC-Cable-DoorLockRelay (18 AWG) is recommended.

#### PoE cabling requirements

The minimal conductor gauge permitted to connect between the PSE or p (0.21 mm<sup>2</sup>) for horizontal or riser cable.

---

#### LEDs

##### PoE in

Steady blue: Adopted/device is ready  
Steady white: Pending adoption  
Blinking white/blue: Upgrading firmware

##### PoE out

Off: Not connected or no data link  
Steady blue: Connected and data link on

---

#### UA-G2

##### Mechanical

##### Dimensions

93 x 40 x 36.5 mm (3.7 x 1.6 x 1.4")

##### Weight

82 g (2.9 oz)

##### Enclosure material

Polycarbonate, glass

##### Mounting

In wall, gang box

##### Weatherproofing

IP55

---

#### Hardware

##### Networking interface

(1) 10/100 MbE RJ45 port

##### Connectivity

BLE 4.1

##### Power method

PoE  
UL 294 Power-limited Class 2 PSU  
UL 60950-1/62368-1 LPS/PS2 PSU

<b>Supported voltage range</b>	48V DC
<b>Max. power consumption</b>	5W
<b>ESD/EMP protection</b>	Air: ±15kV, contact: ±8kV
<b>Sensors</b>	Proximity sensor
<b>Speaker</b>	(1) 8 ohm, 0.7W
<b>LEDs</b>	R/G/B/W
<b>Button</b>	(1) Factory-reset
<b>NFC frequency</b>	13.56 MHz
<b>NFC read range</b>	< 30 mm
<b>NFC standards</b>	ISO 14443A, 14443B, 15693
<b>NFC technology</b>	NFC Tag 1,2,3,4,5 MIFARE Classic MIFAREPlus MIFARE Ultralight MIFARE DESFire
<b>Operating environment</b>	Outdoor use
<b>Ambient operating temperature</b>	-30 to 45° C (-22 to 113° F)
<b>Ambient operating humidity</b>	5 to 90% noncondensing
<b>Software information</b>	The software version of a product can be checked at <a href="https://unifi.ui.com">https://unifi.ui.com</a>
<b>UL 294 level</b>	Destructive attack: Level I Line security: Level I Endurance: Level I Standby power: Level I
<b>UL 294 statement</b>	Compliance with IEEE 802.3 specifications was not verified as part of UL. The equipment is intended to comply with the section of the National Electrical Code, 725.121, Power Sources for Class 2 and Class 3 Circuits.
<b>PoE cabling requirements</b>	Cable 5e cabling is the minimum performance category recommended. To match the transmission speed required at the installation site. The minimal conductor gauge permitted to connect between the PSE or powered device (PD) is 24 AWG (0.21 mm <sup>2</sup> ) for horizontal or riser cabling and 20 AWG (0.52 mm <sup>2</sup> ) for patch cords; 24 AWG (0.21 mm <sup>2</sup> ) for horizontal or riser cabling and 20 AWG (0.52 mm <sup>2</sup> ) for patch cords.
<b>CAN/ULC-60839-11-1 Grade</b>	Grade assignment: I
<b>Certifications</b>	CE, FCC, IC, UL 294, CAN/ULC-60839-11-1
<b>Document number, and issue date and/or revision level</b>	UA-G2/UA-G2-Black, V02

---

## LED

<b>System</b>	Steady blue: Adopted/device is ready Steady white: Pending adoption Blinking white/blue: Upgrading firmware Strobing red: Emergency lockdown
---------------	---

---

## UA-Card Mechanical

<b>Dimensions</b>	85.6 x 53.98 x 0.84 mm (3.37 x 2.13 x 0.03")
<b>Weight</b>	5 g (0.18 oz)
<b>Format</b>	ISO 7810 ID-1
<b>NFC frequency</b>	13.56 MHz
<b>NFC technology</b>	ISO/IEC 14443 Type A MIFARE DESFire UniFi Access Proprietary Security Protocol

### Stay in Touch



[Terms and Conditions](#) | [Terms of Service](#) | [Privacy Policy](#) | [Return Policy](#) | [Cookies Settings](#)

© 2024 Ubiquiti, Inc. All rights reserved.